



Renderings are an artist's conception and are intended only as a general reference. Features, materials, finishes, and layout of subject unit may be different than shown. 3dplans.com

Furniture shown in floor plan is for display purposes and does not come with apartment. Residents will be able to bring their own furniture and decorate how they please!

Possible rent split scenarios\*:

- 4 roommates: \$507/person
- 3 roommates: Shared bedroom - \$599/person
- Private bedroom - \$830

\*These scenarios are simply meant to be guidelines. Rent is flat rate, which means no extra charge for sharing bedrooms. Roommates will ultimately choose how to split rent amongst themselves.

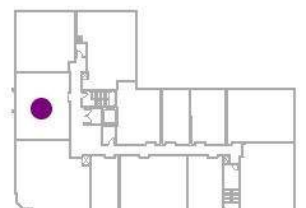


**Fourth Street Cooperative**  
1227 4th St. SE, Minneapolis

**Rent: \$2028/month**  
**2 Bedroom Type A**  
2 Bathrooms  
962sf

Unit dimensions and square footages are approximate and may vary.

UNIT:  
203



1 Unit - Level 2 Only



Renderings are an artist's conception and are intended only as a general reference. Features, materials, finishes, and layout of subject unit may be different than shown. 3dplans.com

Furniture shown in floor plan is for display purposes and does not come with apartment. Residents will be able to bring their own furniture and decorate how they please!

Possible rent split scenarios\*:

- 4 roommates: \$462/person
- 3 roommates: Shared bedroom - \$550/person  
Private bedroom - \$748

\*These scenarios are simply meant to be guidelines. Rent is flat rate, which means no extra charge for sharing bedrooms. Roommates will ultimately choose how to split rent amongst themselves.

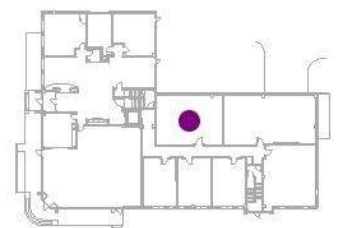


**Fourth Street Cooperative**  
1227 4th St. SE, Minneapolis

**Rent: \$1848/month**  
**2 Bedroom B1**  
2 Bathrooms  
874sf

Unit dimensions and square footages are approximate and may vary.

UNIT:  
110



1 Unit - Level 1 Only



Renderings are an artist's conception and are intended only as a general reference. Features, materials, finishes, and layout of subject unit may be different than shown. 3dplans.com

Furniture shown in floor plan is for display purposes and does not come with apartment. Residents will be able to bring their own furniture and decorate how they please!

Possible rent split scenarios\*:

4 roommates: \$507/person

3 roommates: Shared bedroom - \$599/person

Private bedroom - \$830

\*These scenarios are simply meant to be guidelines. Rent is flat rate, which means no extra charge for sharing bedrooms. Roommates will ultimately choose how to split rent amongst themselves.

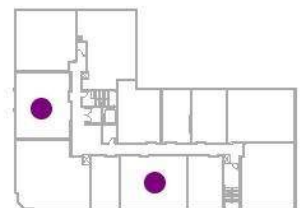


**Fourth Street Cooperative**  
1227 4th St. SE, Minneapolis

**Rent: \$2028/month**  
**2 Bedroom B**  
2 Bathrooms  
964sf (930sf @ Level 6)

Unit dimensions and square footages are approximate and may vary.

UNITS:	
	207
303	307
403	407
503	507
603	607



9 Units - Levels 2-6



Renderings are an artist's conception and are intended only as a general reference. Features, materials, finishes, and layout of subject unit may be different than shown. 3dplans.com

Furniture shown in floor plan is for display purposes and does not come with apartment. Residents will be able to bring their own furniture and decorate how they please!

Possible rent split scenarios\*:

4 roommates: \$498.75/person

3 roommates: Shared bedroom - \$598/person

Private bedroom - \$799

\*These scenarios are simply meant to be guidelines. Rent is flat rate, which means no extra charge for sharing bedrooms. Roommates will ultimately choose how to split rent amongst themselves.



**Fourth Street Cooperative**  
1227 4th St. SE, Minneapolis

**Rent: \$1995/month**

**2 Bedroom C**

**2 Bathrooms**

**955sf (923sf @ Level 6)**

Unit dimensions and square footages are approximate and may vary.

UNITS:

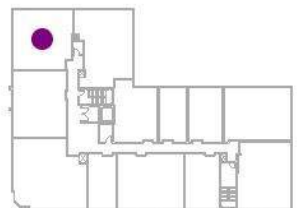
202

302

402

502

602



**5 Units - Levels 2-6**



Renderings are an artist's conception and are intended only as a general reference. Features, materials, finishes, and layout of subject unit may be different than shown. 3dplans.com

Furniture shown in floor plan is for display purposes and does not come with apartment. Residents will be able to bring their own furniture and decorate how they please!

Possible rent split scenarios\*:

4 roommates: \$498.75/person

3 roommates: Shared bedroom - \$598/person

Private bedroom - \$799

\*These scenarios are simply meant to be guidelines. Rent is flat rate, which means no extra charge for sharing bedrooms. Roommates will ultimately choose how to split rent amongst themselves.



**Fourth Street Cooperative**  
1227 4th St. SE, Minneapolis

**Rent: \$1995/month**

**2 Bedroom D**

**2 Bathrooms**

**953sf (935sf @ Level 6)**

Unit dimensions and square footages are approximate and may vary.

UNITS:

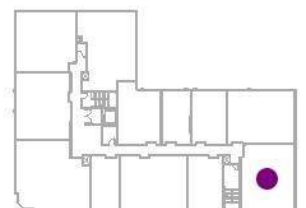
211

311

411

511

611



**5 Units - Levels 2-6**



Renderings are an artist's conception and are intended only as a general reference. Features, materials, finishes, and layout of subject unit may be different than shown. 3dplans.com

Furniture shown in floor plan is for display purposes and does not come with apartment. Residents will be able to bring their own furniture and decorate how they please!

Possible rent split scenarios\*:  
 4 roommates: \$498.75/person  
 3 roommates: Shared bedroom - \$598/person  
 Private bedroom - \$799

\*These scenarios are simply meant to be guidelines. Rent is flat rate, which means no extra charge for sharing bedrooms. Roommates will ultimately choose how to split rent amongst themselves.



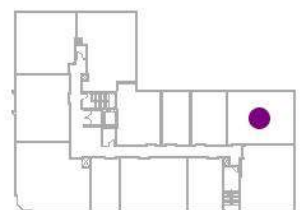
**Fourth Street Cooperative**  
 1227 4th St. SE, Minneapolis

**Rent: \$1995/month**  
**2 Bedroom E**  
 2 Bathrooms  
 946sf (911sf @ Level 6)

Unit dimensions and square footages are approximate and may vary.

UNITS:

- 212
- 312
- 412
- 512
- 612



5 Units - Levels 2-6